



certi[®]
30 anos

BRIEF OVERVIEW OF THE CERTI SYSTEM

Profile and Aim

Nature:

Private, non-profit, RD&I institution.

Size:

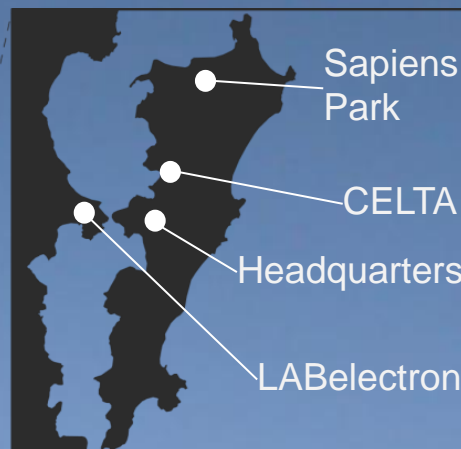
~ 350 employees

Mission:

To provide strategic and innovative solutions to our customers, based on universal knowledge and advanced research results ...



The CERTI system

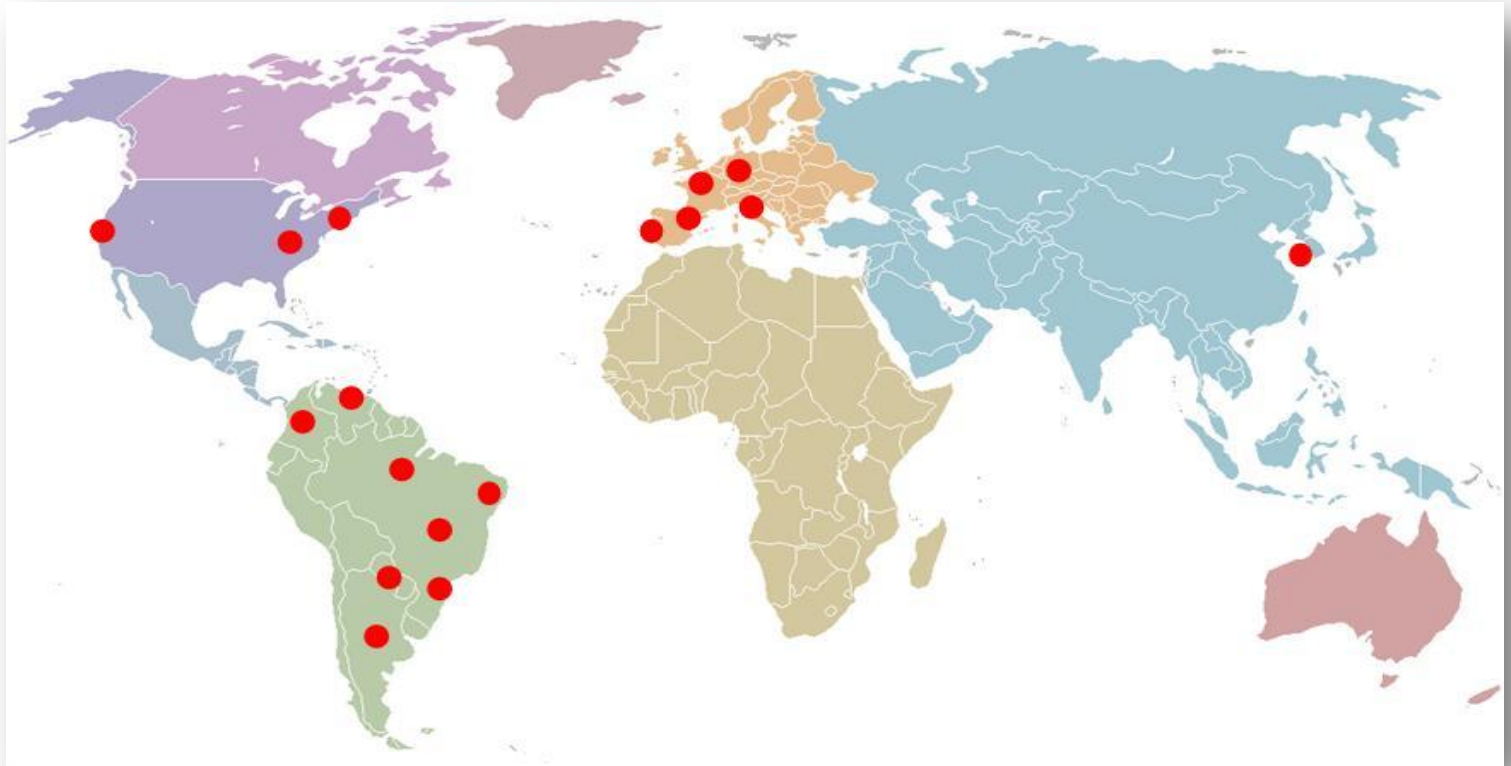


CERTI: Florianópolis, SC - Brazil

CERTI Amazônia: Manaus, AM

Sapientia; Brasília, DF

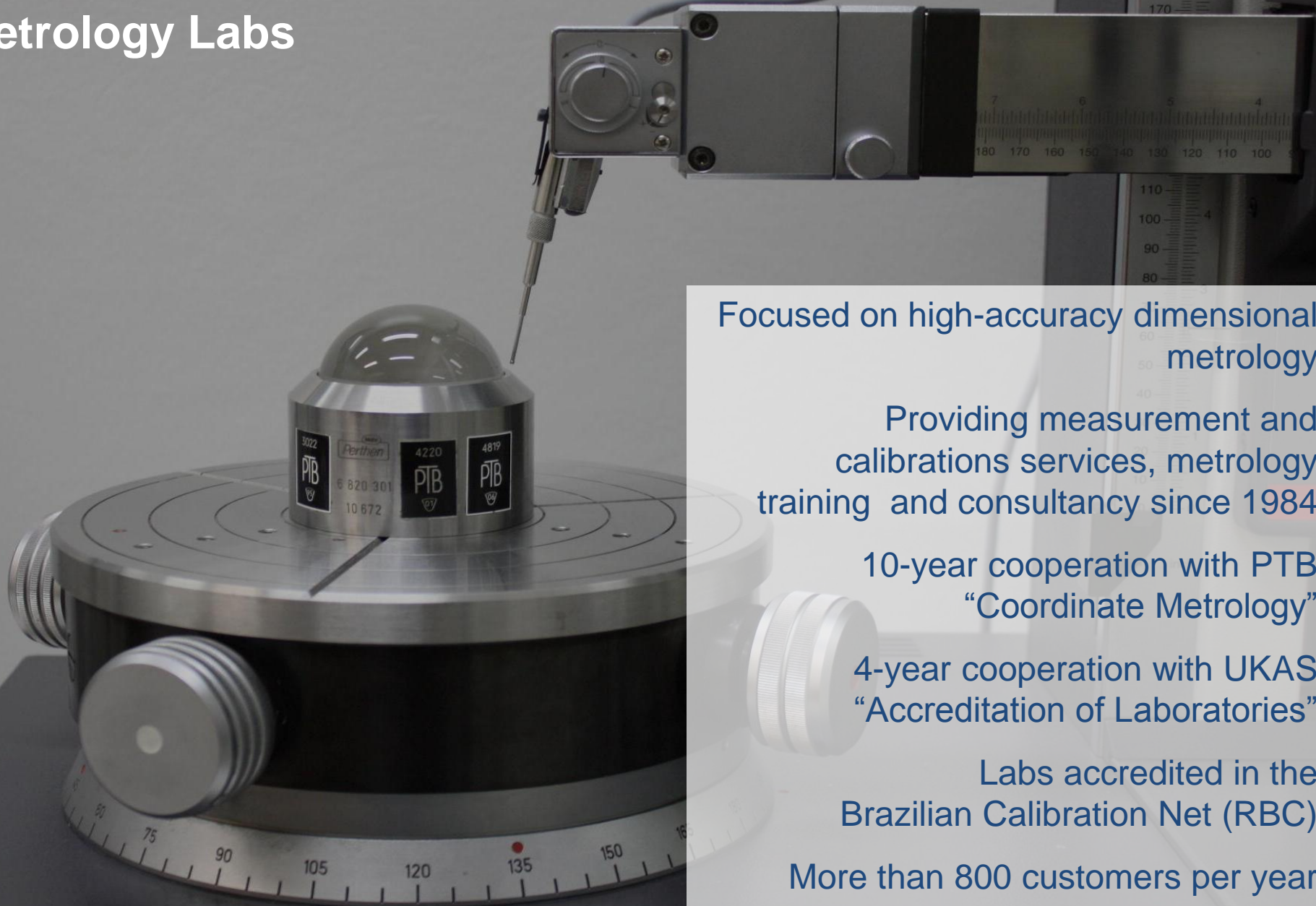
National and international cooperation



Competences and Centers

Green Economy
Sustainable Energies
Digital Convergence
Innovative Entrepreneurship
Industrial Manufacturing
Mechatronic Product Design
Metrology and Instrumentation

Metrology Labs



Focused on high-accuracy dimensional metrology

Providing measurement and calibrations services, metrology training and consultancy since 1984

10-year cooperation with PTB
“Coordinate Metrology”

4-year cooperation with UKAS
“Accreditation of Laboratories”

Labs accredited in the
Brazilian Calibration Net (RBC)

More than 800 customers per year



LABelectron – Electronics LabFaber

Manufacturing facility and laboratory at the same time.

Specialized in small batch assembly of printed circuit boards and electronic products.

Technological upgrade of Brazilian products by embedding modern electronics.

R&D&I in manufacturing technologies and quality assurance.

CELTA – Pioneer and most awarded incubator

Since 1987 promoting technology-based business.

Software, microelectronics, automation, precision mechanics, media and games, energy, environment, instrumentation, optoelectronics and biomedical engineering.

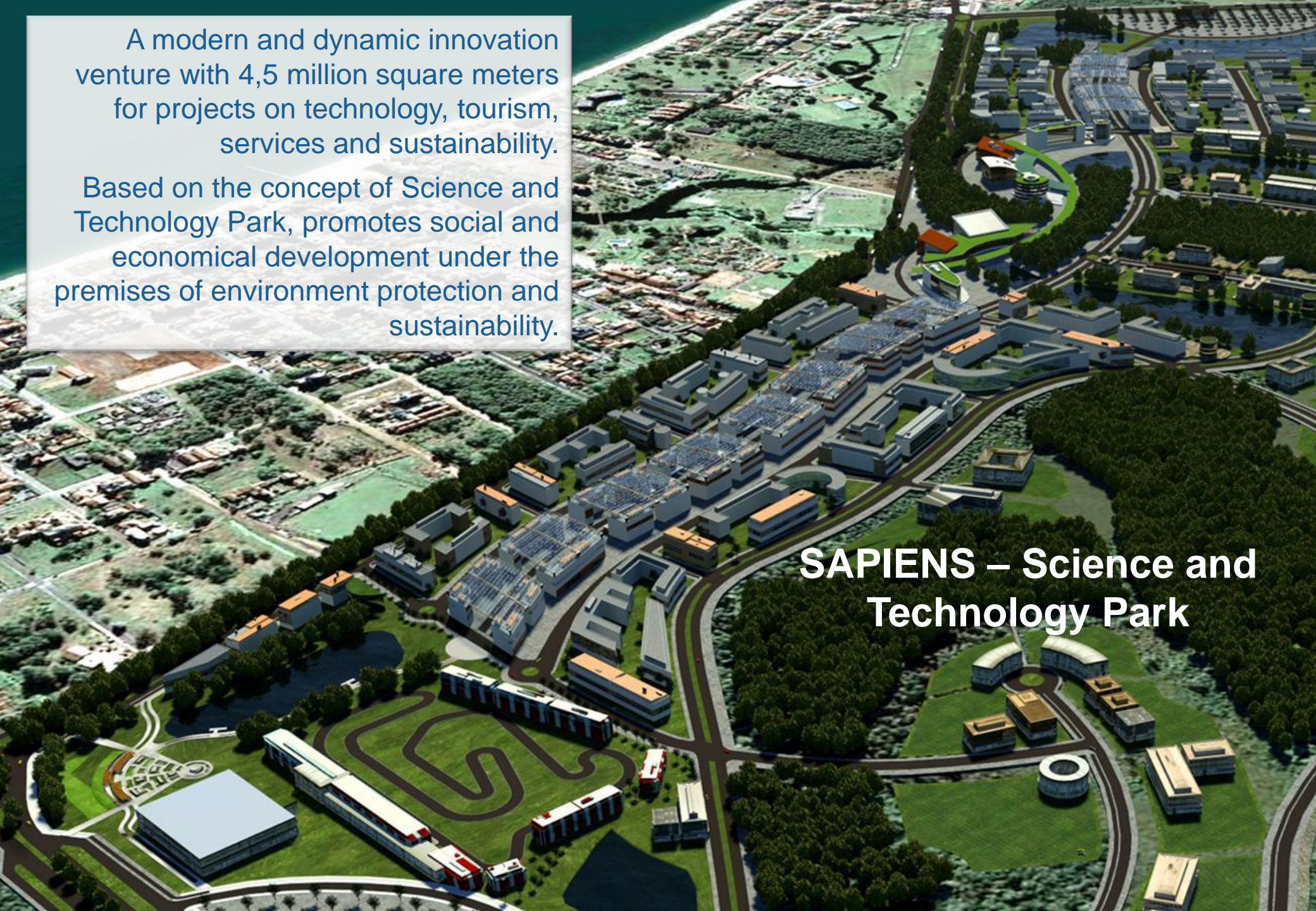
35 enterprises being incubated;
more than 80 graduated.



A modern and dynamic innovation venture with 4,5 million square meters for projects on technology, tourism, services and sustainability.

Based on the concept of Science and Technology Park, promotes social and economical development under the premises of environment protection and sustainability.

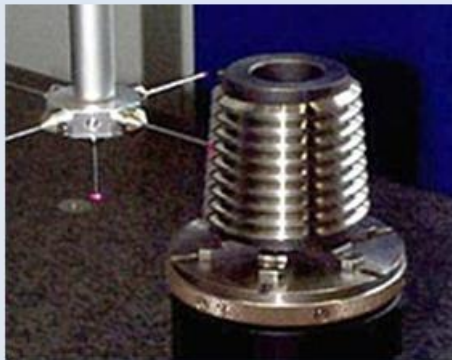
SAPIENS – Science and Technology Park



Sample Projects: Metrology and Quality Control



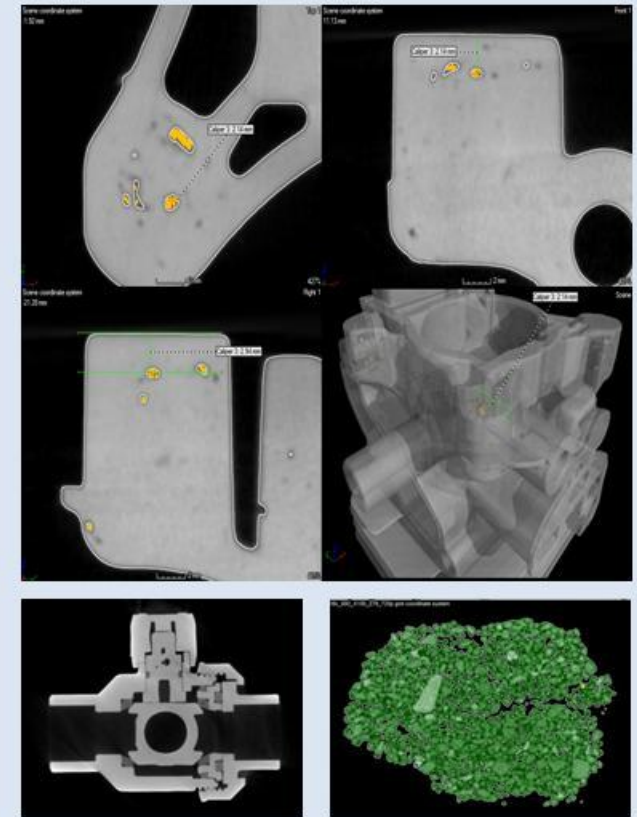
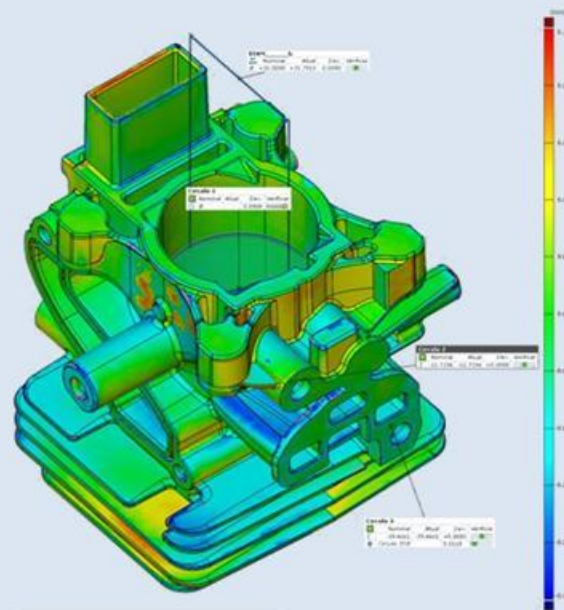
Development of procedures and quality system to calibrate API thread working gages in Brazil



Deutsche Forschungsgemeinschaft
DFG



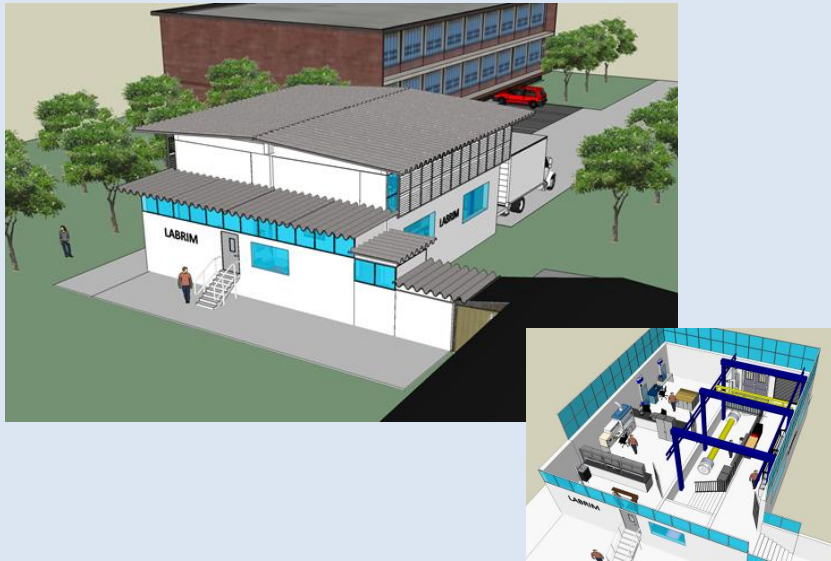
Basic research on the application of industrial computed tomography as a dimensional metrology technique



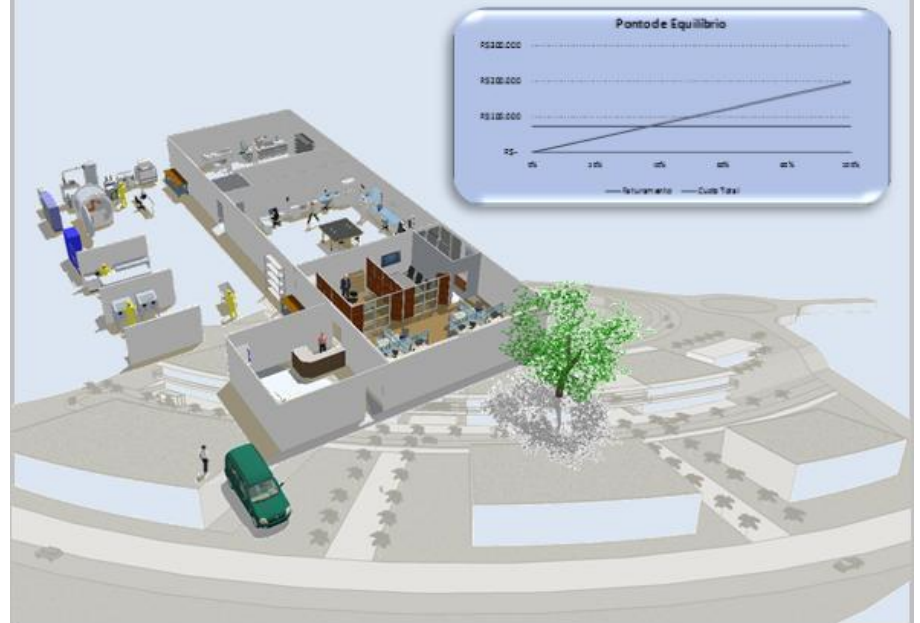
Sample Projects: Lab design and Tech Centers

Private company Supplier of high-tech components for the Oil & Gas industry

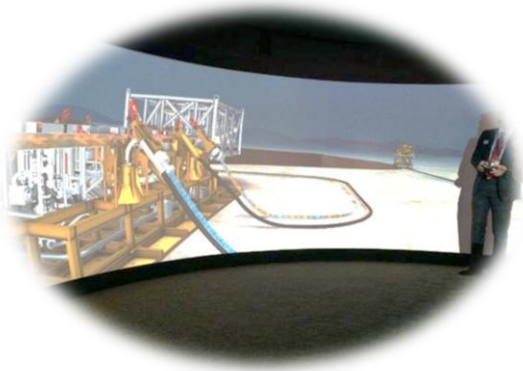
Business plan, layout and building refit plan (including labelling), equipment selection, quality system (including testing procedures and uncertainty evaluation)



Business plan and preliminary project of a technology center dedicated to powertrain technologies



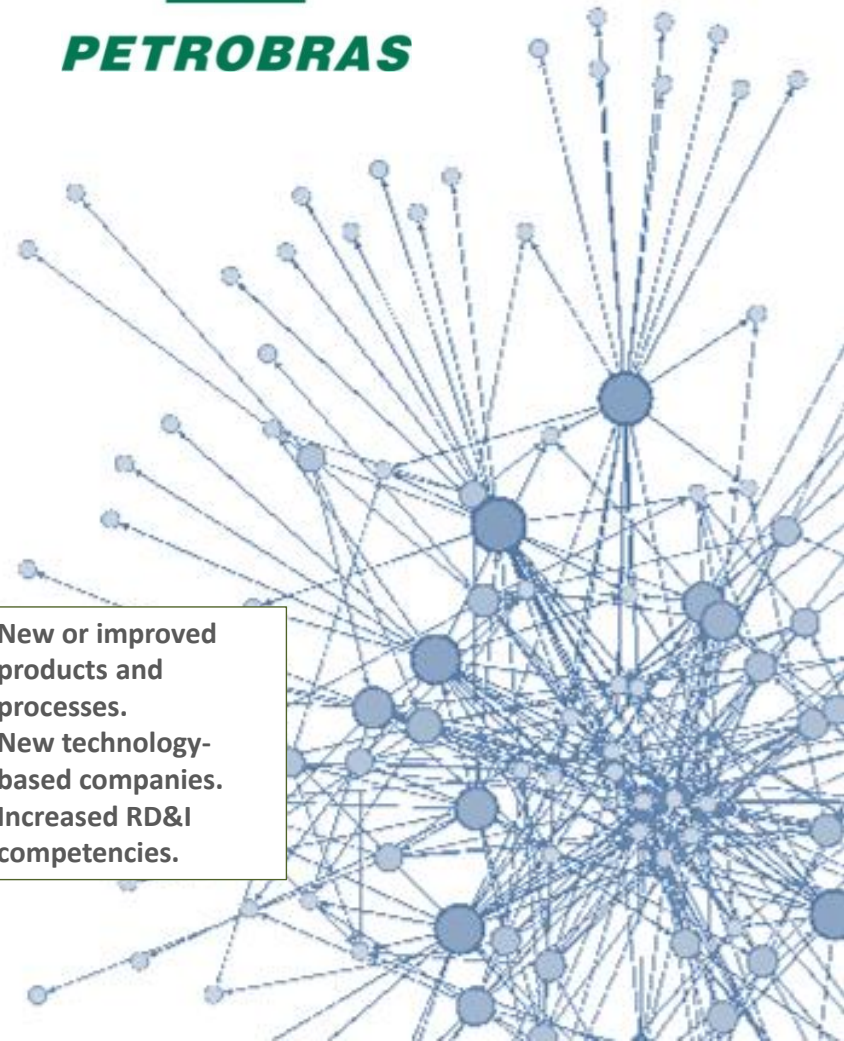
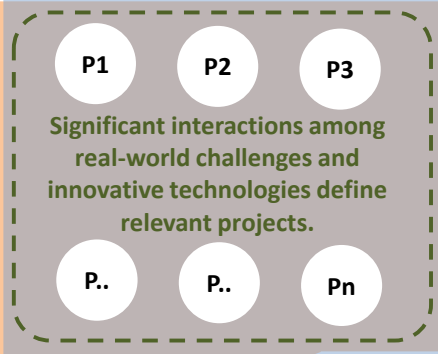
Sample Projects: Design and Implementation of a RD&I Network



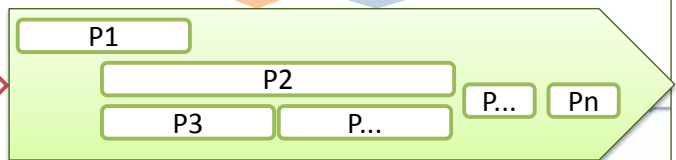
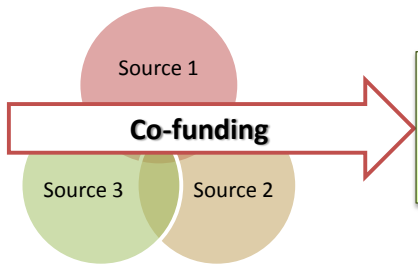
**Application dimension
Companies (operators &
other)**

Significant real-world challenges that justify investment in RD&I (e.g. change in E&P conditions, new safety requirements / regulations, integrity cost reduction, etc.).

Technology dimension
Universities and RD&I Centers
Innovative technologies, educated human resources.



- New or improved products and processes.
- New technology-based companies.
- Increased RD&I competencies.

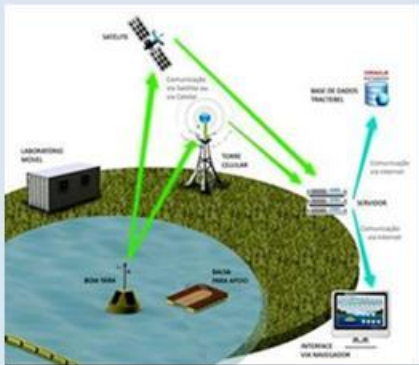


Consistent, application - oriented RD&I program applying specific technologies

Sample Projects: Instrumentation and Testing



Buoy to survey water quality parameters in hydroelectric dams



Sensor network to survey environmental parameters in a science and technology park



Sample Projects: Development of OLED Light Sources, Production Processes and Systemic Applications



- 3 Year Project with Overall investment of U\$ 10 M
- 3 Generations of Light Sources (Interconnection, Electronics, Encapsulation)
- 2 Manufacturing Cells
- 5 Systemic Lighting Applications



Sample Projects: Embedded Electronics

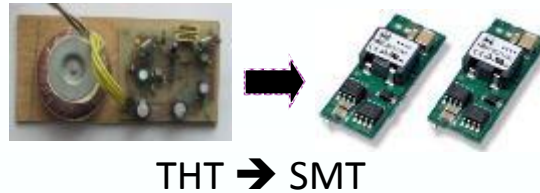
Insertion of Electronics in Products



- Hardware
- Layout
- Firmware



Technology Migration of Electronic Products



THT → SMT



RoHS Adequacy

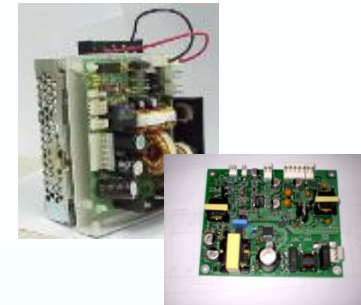


Layout oriented to manufacturing standards

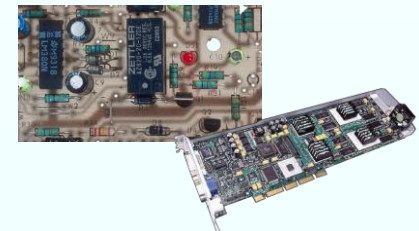
Miniaturization and Integration



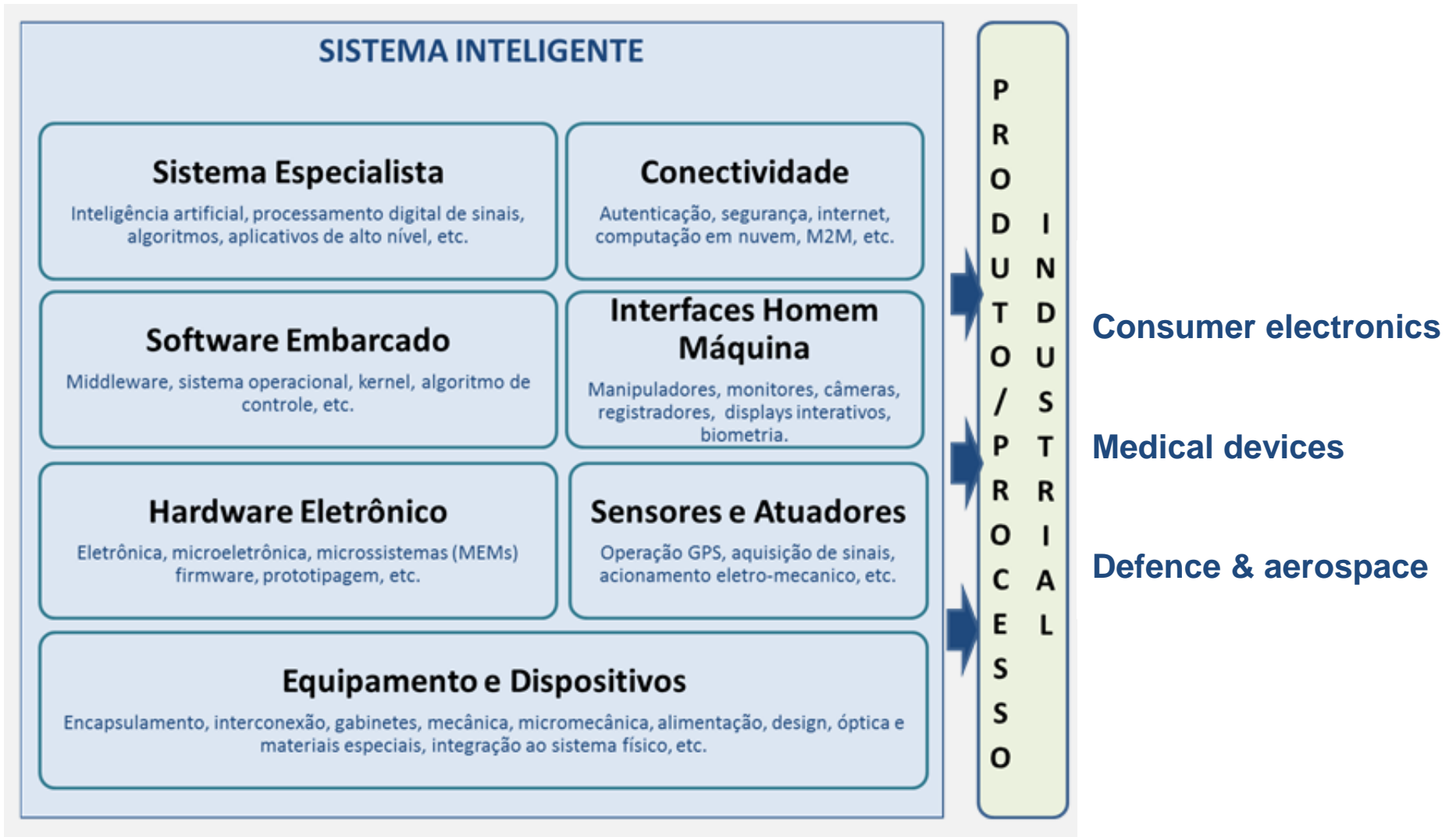
Technology Update of Electronic Products



- Insertion of new functions
- Performance improvement
- New production Processes



EMBRAPII Unit (since October 2014)



Customers

SIEMENS

AOC[®]
ENVISION

PHILIPS

natura

POSITIVO

hp
invent

EMBRAER

SEMP TOSHIBA

TOTVS

LG

Whirlpool

BR

intelbras

PETROBRAS

oi

AV6

STIHL[®]

NOKIA

ABDI
Agência Brasileira de Desenvolvimento Industrial

UEG

ANPROTEC.

INMETRO

FAPESC
FUNDAÇÃO DE APOIO À PESQUISA
CIENTÍFICA E TECNOLÓGICA DO
ESTADO DE SANTA CATARINA

BRASIL
UM PAÍS DE TODOS

SEBRAE

SENAI

CERTI – Highlights

- Focused on development and innovation, rather than on fundamental research.
- End-to-end approach ... from the idea to the product in the market.
- Contractor of R&D projects and supplier of technical services.
- Broad range of technical competences, organized in Reference Centers (business units).
- Technology partnership with national and international institutions, permitting fast development of new technical areas.
- Agile and non-bureaucratic operation due to its private nature and own permanent staff.

***Thank you for the
attention!***



Prof. Dr. Eng. Gustavo Daniel Donatelli
gd@certi.org.br